



Parenting behaviors and adolescents' alcohol use: The mediating role of youth perceptions of the laws

Catherine Cimon-Paquet, MSc

PhD Candidate, Université du Québec à Montréal

Visiting graduate student, Université de Liège

Marie-Hélène Véronneau, PhD, Professor, Université du Québec à Montréal

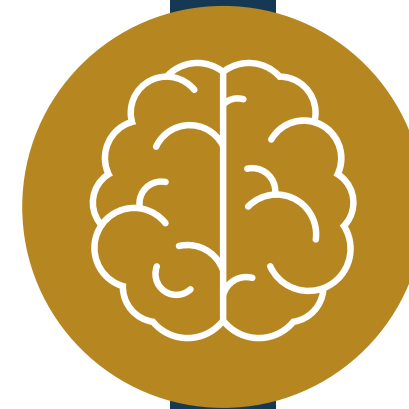
Cécile Mathys, PhD, Professor, Université de Liège

ALCOHOL USE DURING ADOLESCENCE



BRAIN DEVELOPMENT

Long-lasting changes in brain structure and cognitive functioning



SOCIAL AND BEHAVIORAL CONSEQUENCES

Risky sexual behaviors, antisocial behaviors and alcohol problems later in life



Najman et al., 2019;
Richwood et al., 2015;
Silins et al., 2018;
for reviews, see Lees et al., 2020
and Spear et al., 2018

CORRELATES OF ALCOHOL USE

PARENTAL BEHAVIORS



Parental monitoring

- Parental control
- Parental solicitation

Parental alcohol-specific rules

Stattin & Kerr, 2000; Omer et al., 2016

LAWS

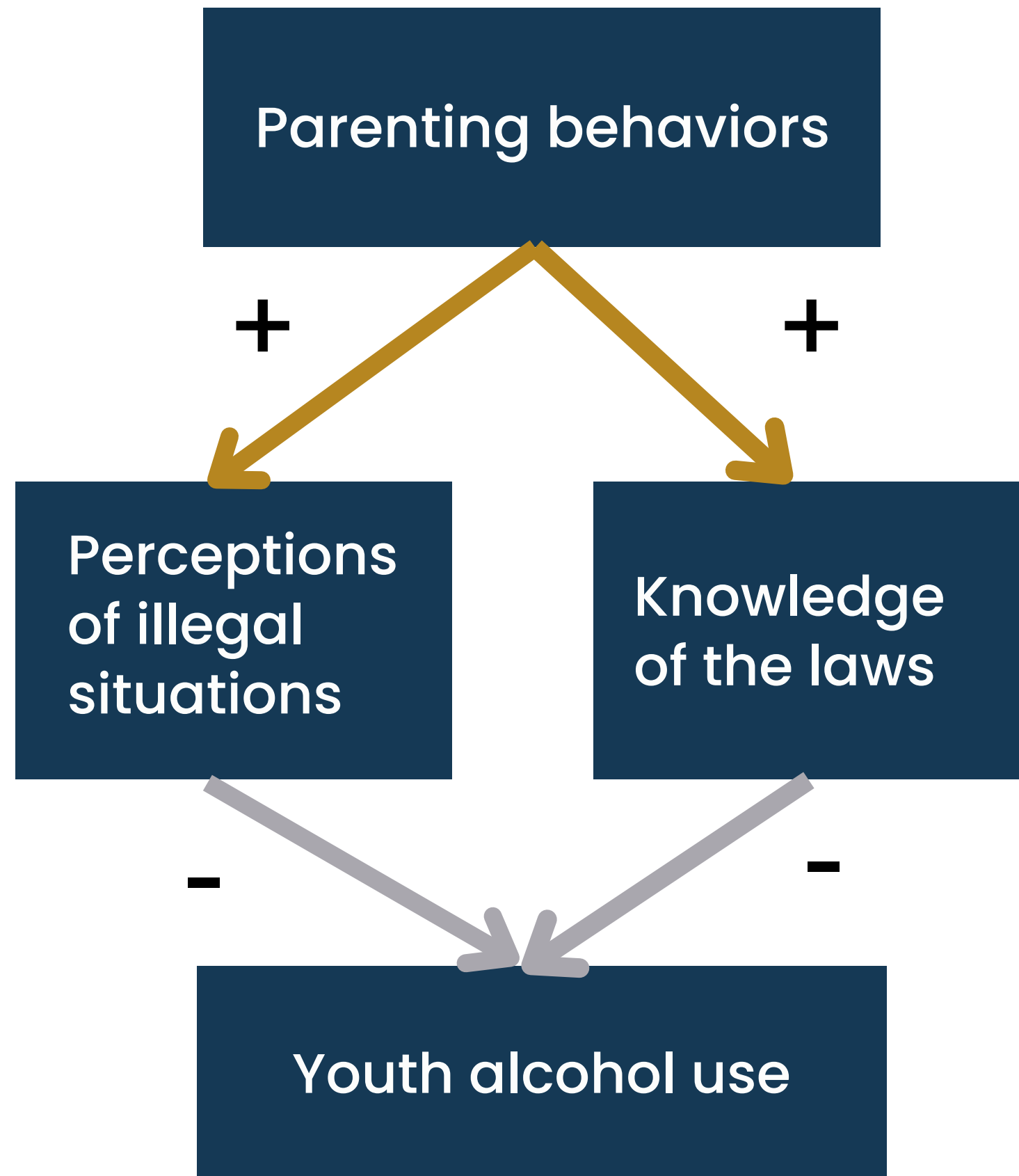


Perception of illegal situations

Knowledge of the laws

Van Petegem et al., 2021

OBJECTIVE



PARTICIPANTS

1154 adolescents (705 girls, 449 boys)

M age = 16.34, SD = 1.33

Languages : 54.9% French and 45.1% Flemish



MEASURES (QUESTIONNAIRES)

Parental monitoring

Stattin & Kerr, 2000

- Parental control, 6 items; $\alpha = .82$ and
- Parental solicitation, 5 items; $\alpha = .77$

Parental alcohol-specific rules

Van der Vorst et al., 2005, 10 items, $\alpha = .93$

Perceptions and knowledge of the laws

2 situational vignettes

Alcohol use

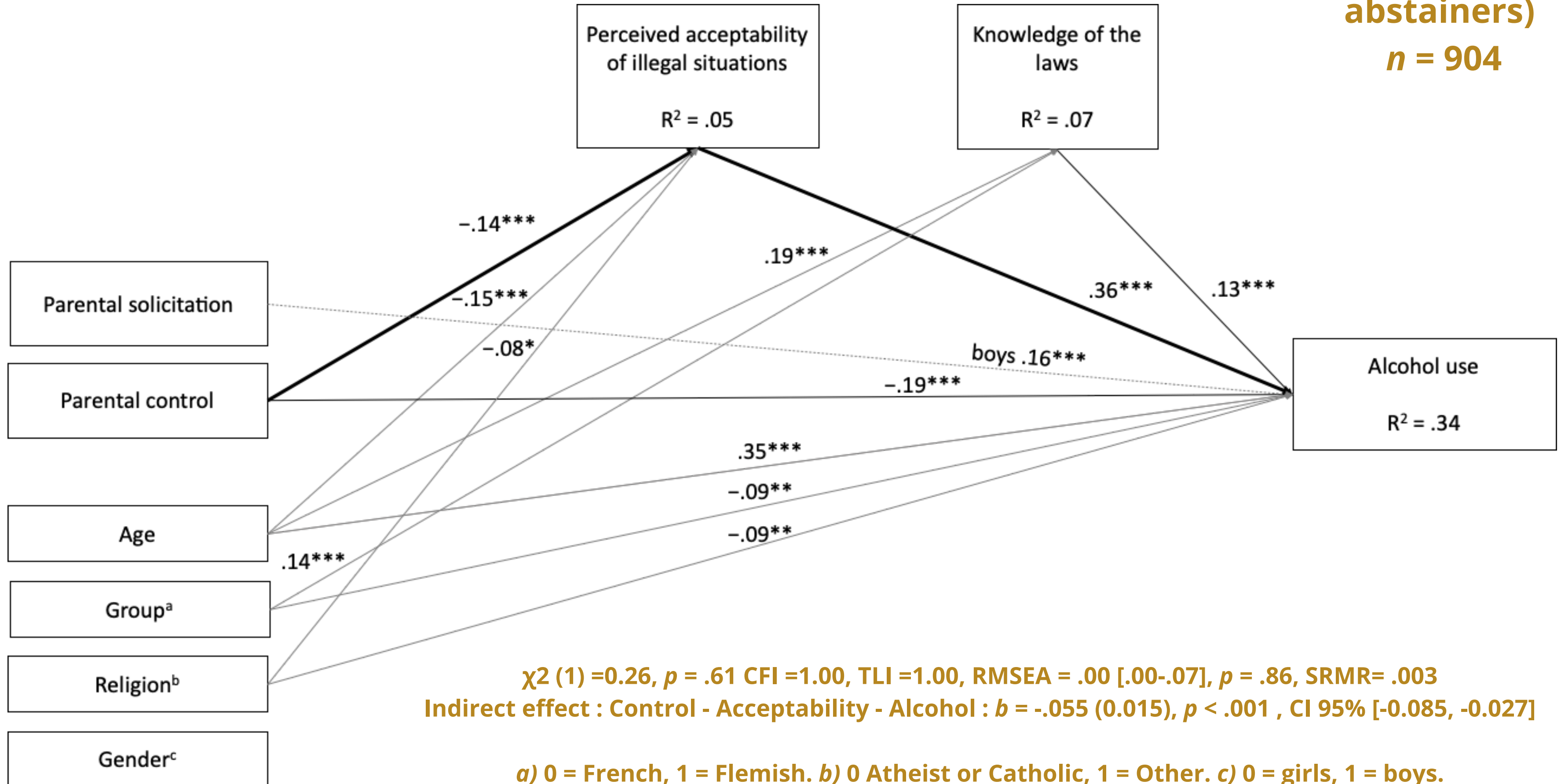
Adolescent Alcohol Involvement Scale

Mayer & Filstead, 1979; 14 items, $\alpha = .94$



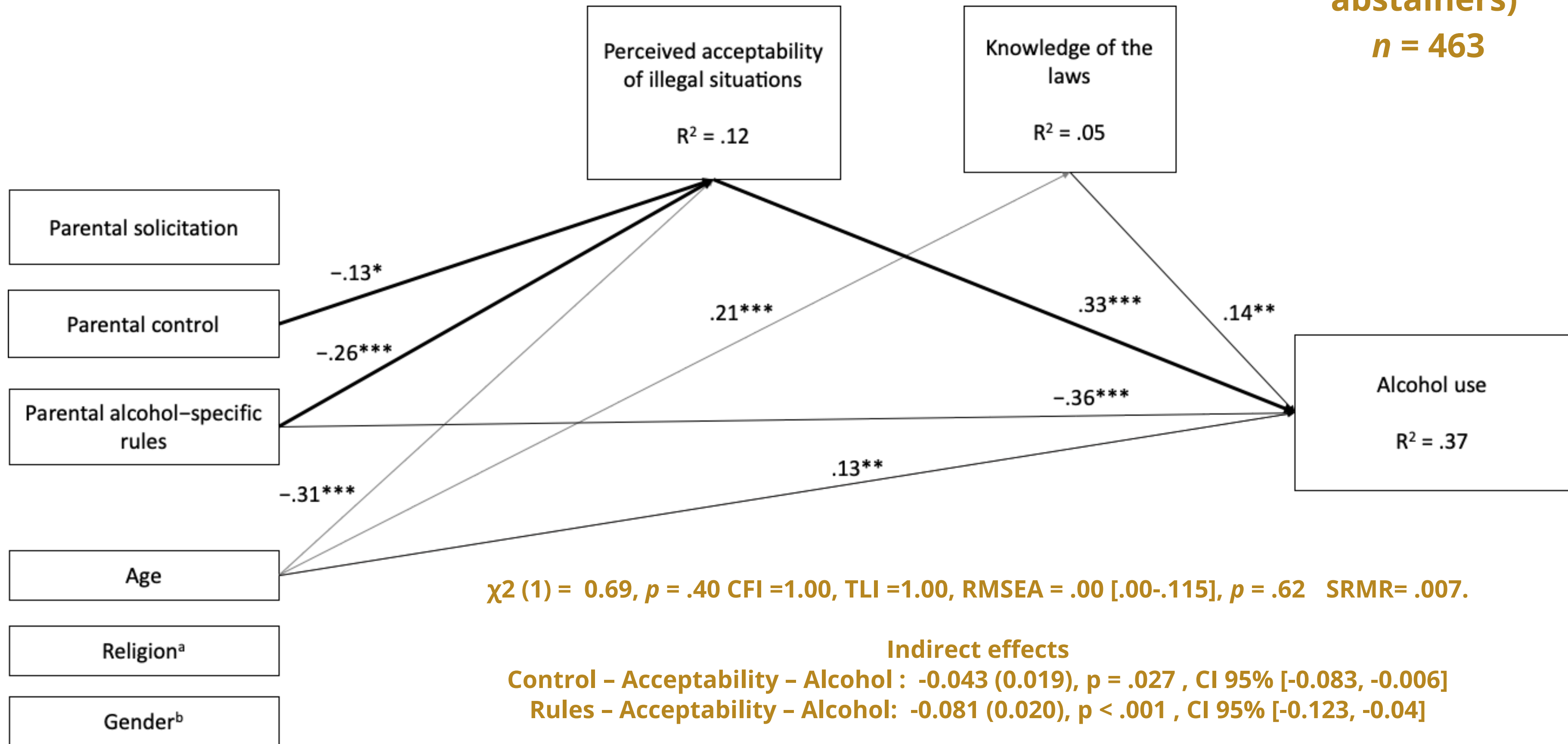
RESULTS

Full sample
(excluding
abstainers)
 $n = 904$



RESULTS

Flemish sample
(excluding
abstainers)
n = 463



DISCUSSION

General **parental control** and **alcohol-specific rules** were both associated with lower alcohol use.

Acceptability of illegal situations, but not knowledge of the laws, mediated these links.

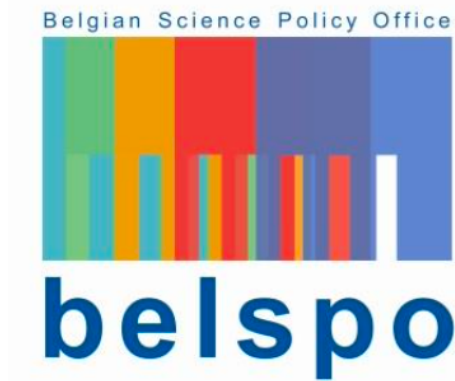
Family interventions should focus on **norms and attitudes** towards alcohol, and also on **parental rules**.

L[∞]ÉPSIS

Laboratoire d'études sur les parcours
scolaires et les influences sociales

CRSH  SSHRC

Conseil de recherches en sciences humaines
Social Sciences and Humanities Research Council



UQÀM

Thank you!



cimon_paquet.catherine@courrier.uqam.ca



www.lepsis.uqam.ca



@ccpaquet



@catherinecimonpaquet



We are grateful for the participants, lab members at UQAM and ULiège, and funding agencies.

Funding : The Belgian Science Policy Office (BELSPO grant for the research project), Social Sciences and Humanities Research Council (SSHRC doctoral fellowship), and Université du Québec à Montréal (mobility grant).